



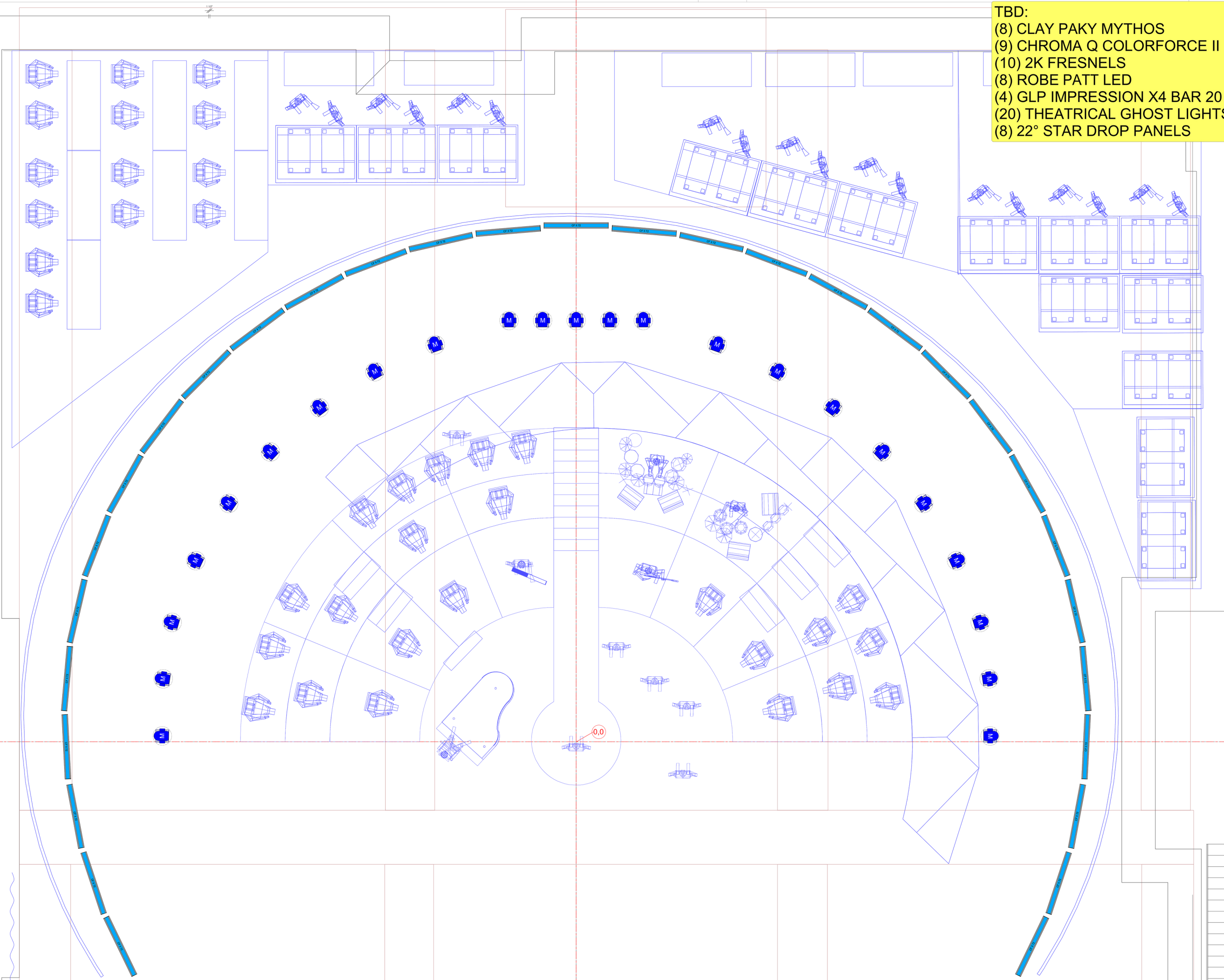
ENTERTAINMENT DESIGN GROUP
Please recycle this paper.

This document and the ideas and design incorporated herein, as an instrument of professional service, is the property of ENT and is not to be used, in whole or part, for any other project without the written authorization of ENT. This document is not to be reproduced or modified in any way, nor shall any reproduction of this document be modified, with out prior written consent of ENT. This drawing represents visual concepts and construction suggestions only; it does not replace the knowledge and advice of a licensed electrical engineer. The designer does not warrant, in any way, the accuracy of this information and shall not be responsible for discrepancies between this document and the existing conditions. The designer will not assume responsibility for improper engineering, construction, handling or use of this lighting equipment.

INSTRUMENT KEY

-  PRG Best Boy HP Ground Control @ 2.1kw
-  PRG Best Boy HP @ 2.1kw
-  Clay Paky Mythos @ 500w
-  Chroma Q Color Force II 72 @ 800w

TBD:
 (8) CLAY PAKY MYTHOS
 (9) CHROMA Q COLORFORCE II 72"
 (10) 2K FRESNELS
 (8) ROBE PATT LED
 (4) GLP IMPRESSION X4 BAR 20
 (20) THEATRICAL GHOST LIGHTS
 (8) 22° STAR DROP PANELS



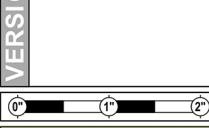
VENUE
UNIVERSAL STAGE 27
LOS ANGELES, CA

SHOW
MICHAEL BUBLE LOVE

LOAD-IN	SHOWDAY	SHOW #
01/10/18	01/15-16/19	#1912

DESIGNER	BOB BARNHART
LEAD L.D.	PAUL BELL JR.
GAFFER	ANDY O'REILLY
PROG. 1:	PATRICK BOOZER
LEAD TECH	TBD

01. PRELIMINARY 01 / 07 / 19



PRINT ARCH D SHEET

SCALE: 1/4" = 1'-0"

DRAWN BY: BEG

CONTENTS
LX-01: OVERVIEW
LX-02: FLOOR

SHEET #

LX-02

PUBLISH DATE: 01/07/2019

FLOOR