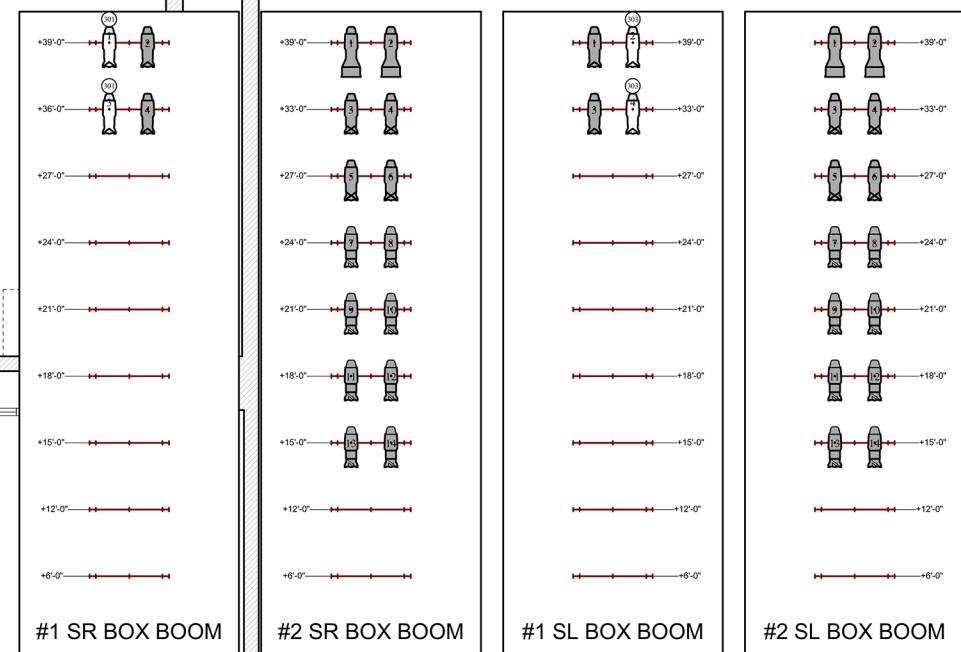
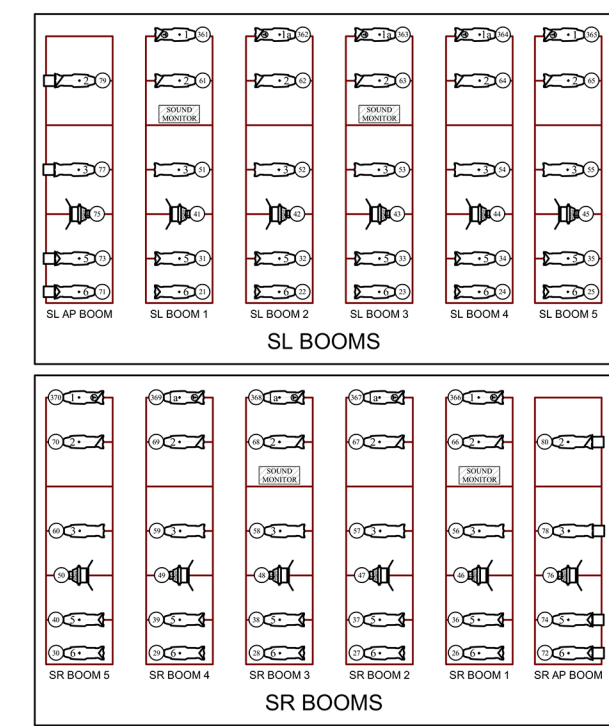


| | | |
|--------------------------|---------|----|
| BLACK TRAVELER / 6 LEGS | 42'-2" | 59 |
| 6 ELECTRIC | 41'-6" | 58 |
| | 40'-10" | 57 |
| 5B ELECTRIC | 40'-2" | 56 |
| | 39'-6" | 55 |
| 5A ELECTRIC | 38'-10" | 54 |
| | 38'-2" | 53 |
| PLASTIC (GRID) | 36'-10" | 51 |
| BLACK BORDER (GRID) | 36'-2" | 50 |
| BLACK SCRIM (GRID) | 35'-6" | 49 |
| | 34'-10" | 48 |
| 5 BLACK LEGS | 33'-6" | 47 |
| 5 BLACK BORDER | 32'-10" | 46 |
| 5 ELECTRIC (GRID) | 32'-2" | 45 |
| | 31'-6" | 44 |
| 4 ELECTRIC | 30'-10" | 43 |
| | 30'-2" | 42 |
| | 28'-10" | 40 |
| 3A ELECTRIC | 28'-2" | 39 |
| DEAD / NOT AVAILABLE | 26'-10" | 38 |
| DEAD / NOT AVAILABLE | 26'-2" | 37 |
| #3 ORCHESTRA SHELL | 25'-6" | 36 |
| DEAD / NOT AVAILABLE | 24'-10" | 35 |
| 4 BLACK LEGS | 24'-2" | 34 |
| 4 BLACK BORDER | 23'-6" | 33 |
| | 22'-10" | 32 |
| | 22'-2" | 31 |
| 3 ELECTRIC | 21'-6" | 30 |
| | 20'-10" | 29 |
| 2B ELECTRIC | 20'-2" | 28 |
| | 19'-6" | 27 |
| 3 BLACK LEGS | 18'-2" | 26 |
| 3 BLACK BORDER | 17'-6" | 25 |
| DEAD / NOT AVAILABLE | 16'-10" | 24 |
| DEAD / NOT AVAILABLE | 16'-2" | 23 |
| #2 ORCHESTRA SHELL | 15'-6" | 22 |
| DEAD / NOT AVAILABLE | 14'-10" | 21 |
| 2A ELECTRIC | 14'-2" | 20 |
| | 13'-6" | 19 |
| | 12'-10" | 18 |
| 2 ELECTRIC | 12'-2" | 17 |
| | 11'-6" | 16 |
| 2 BLACK LEGS | 10'-8" | 15 |
| 2 BLACK BORDER | 9'-6" | 14 |
| | 8'-10" | 13 |
| | 8'-2" | 12 |
| 1A ELECTRIC | 7'-6" | 11 |
| DEAD / NOT AVAILABLE | 6'-10" | 10 |
| DEAD / NOT AVAILABLE | 6'-2" | 9 |
| #1 ORCHESTRA SHELL | 5'-6" | 8 |
| DEAD / NOT AVAILABLE | 4'-10" | 7 |
| | 4'-2" | 6 |
| | 3'-6" | 5 |
| 1 ELECTRIC | 2'-10" | 4 |
| 1 BLACK LEGS | 2'-2" | 3 |
| BLACKOUT DROP / 1 BORDER | 1'-6" | 2 |
| MAIN CURTAIN | 0'-8" | 1 |
| PLASTER LINE | 0'-0" | PL |



danc(e)volve 2018
HARRIS THEATER
CHICAGO, IL

REPERTOIRE / PROGRAM:

DAS FELD
 CHOR BY: FLORIAN LOCHNER
 LIGHTING DESIGN: KALI STORY

FOLD ME
 CHOR BY: ALICE KLOCK
 LIGHTING DESIGN: KALI STORY

INTERMISSION

COMMON THREAD
 CHOR BY: RENA BUTLER, FLORIAN LOCHNER
 LIGHTING DESIGN: KALI STORY

III. THIRD
 CHOR BY: RENA BUTLER
 LIGHTING DESIGN: KALI STORY

HUBBARD STREET
DANCE CHICAGO

SCOTT NELSON
 DIRECTOR OF PRODUCTION
 SNELSON@HUBBARDSTREETDANCE.COM
 312.850.9744 EXT. 169

KALI STORY
 LIGHTING SUPERVISOR
 KSTORY@HUBBARDSTREETDANCE.COM
 312.850.9744 EXT. 169

SYMBOL KEY:

| | | | | | | | |
|--|--------------------------|--|------------------------------------|--|-----------------------------|--|-----------------------------|
| | ETC SOURCE FOUR 19° 750W | | MARTIN RUSH PAR 1 RGBW 78W | | 10° FRESNEL 2K | | 3 CELL CYC UNIT |
| | ETC SOURCE FOUR 26° 750W | | ETC SOURCE FOUR PAR NSP LENS, 750W | | 14° FRESNEL 5K | | 3 CELL MINI STRIP GROUNDROW |
| | ETC SOURCE FOUR 10° 750W | | ETC SOURCE FOUR PAR MFL LENS, 750W | | MAC VIPER WASH DX 1200W | | |
| | ETC SOURCE FOUR 19° 750W | | ETC SOURCE FOUR 50° 750W | | MAC VIPER PERFORMANCE 1200W | | |

UNIT KEY

UNIT NO.
 CHANNEL NO.

ACCESSORIES KEY

TEMPLATE
 IRIS
 TOP HAT
 SCROLLER

THIS DRAWING REPRESENTS VISUAL CONCEPTS AND CONSTRUCTION SUGGESTIONS ONLY.

The Company is unqualified to determine the structural or electrical appropriateness of this design, and will not assume responsibility for improper engineering, construction, handling, or use. All materials and construction must comply with the most stringent applicable Federal and Local Fire, Safety, Energy, and Environmental Codes.

GROUNDPLAN

SCALE: 1/4" = 1'-0"

DATE: 12/18/2018

DRAWN: K. STORY

1 of 1