

# LEGEND

## Light

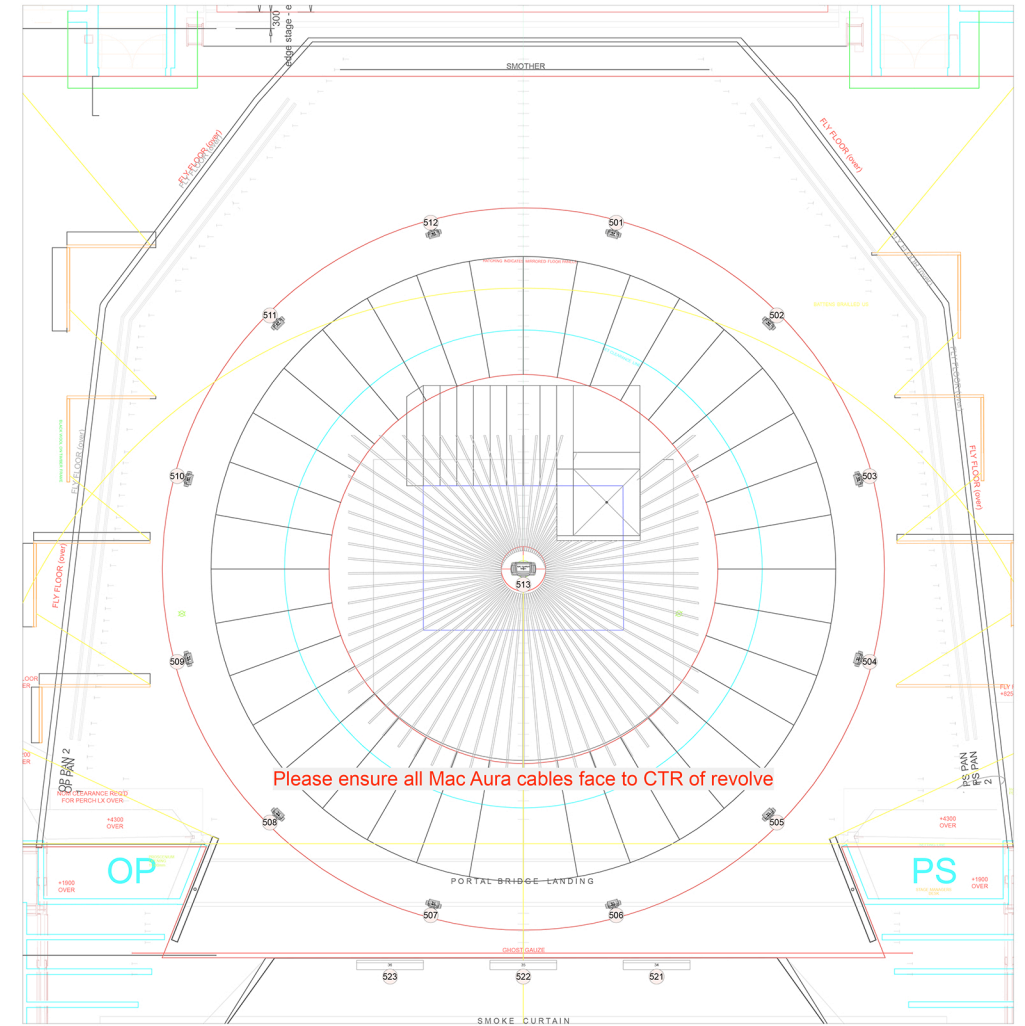
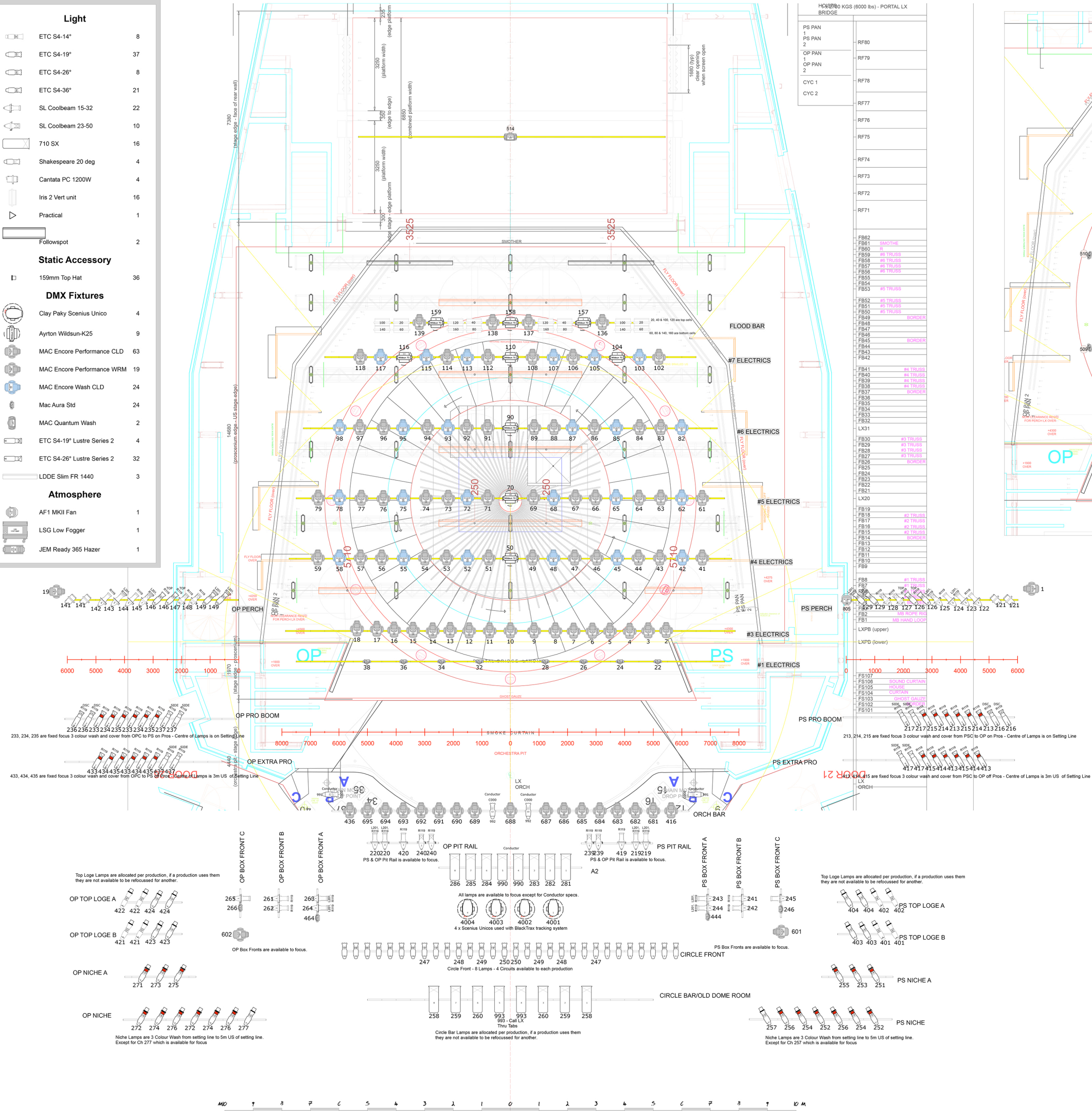
- ETC S4-14° 8
- ETC S4-19° 37
- ETC S4-26° 8
- ETC S4-36° 21
- SL Coolbeam 15-32 22
- SL Coolbeam 23-50 10
- 710 SX 16
- Shakespeare 20 deg 4
- Cantata PC 1200W 4
- Iris 2 Vert unit 16
- Practical 1
- Followspot 2

## Static Accessory

- 159mm Top Hat 36
- DMX Fixtures**
- Clay Paky Scenius Unico 4
- Ayrton Wildsun-K25 9
- MAC Encore Performance CLD 63
- MAC Encore Performance WRM 19
- MAC Encore Wash CLD 24
- Mac Aura Std 24
- MAC Quantum Wash 2
- ETC S4-19° Lustr Series 2 4
- ETC S4-26° Lustr Series 2 32
- LDDE Slim FR 1440 3

## Atmosphere

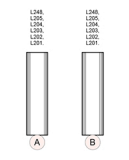
- AF1 MKII Fan 1
- LSG Low Fogger 1
- JEM Ready 365 Hazer 1



## SET ELECTRICS + ATMOSPHERE

- Hazer
- Low Fogger. Positioned USC
- Tiny fogger in ship. Batteries + RC4

## FOLLOW SPOTS



## BLACK TRAX

- 1 Suzuki
- 2 Sharpless
- 3 Goro
- 4 Yamadori
- 5 Bonzo
- 6 Kate
- 7 Child
- 8 Pinkerton



MADAMA BUTTERFLY

Director  
GRAEME MURPHY

Scene Designer  
MICHAEL SCOTT MITCHELL

Costume Designer  
JENNIFER IRWIN

Lighting Designer  
DAMIEN COOPER

Master Electrician  
JASON MOPHETT  
DAVE PARSONS

LX Programmer  
JOHN LLEWELYN  
SUSIE BROOKS

Lighting Plan  
Draft  
#2  
12th June 2017

Sheet  
Set-1  
of  
1 SHEET

JOAN SUTHERLAND  
OPERA THEATRE  
SCH

Scale  
1:50 @ A0

DAMIEN COOPER  
Lighting Design  
Pty Ltd

25 Darvall Street  
Belmore NSW  
Sydney, Australia

Mobile: 0412 407 047  
dcooper123@mac.com