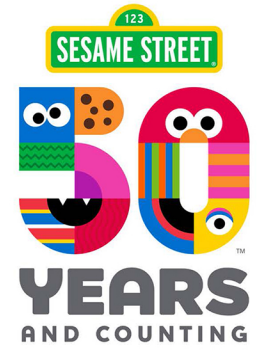


THIS DRAWING AND THE IDEAS, ARRANGEMENT, DESIGNS, AND PLANS, INDICATED HEREON OR REPRESENTED HEREBY ARE OWNED BY AND REMAIN THE EXCLUSIVE PROPERTY OF THE LIGHTING DESIGN GROUP, INC. THEY HAVE BEEN CREATED AND DEVELOPED FOR THE USE ON AND IN CONNECTION WITH THE SPECIFIED PROJECT. WRITTEN DIMENSIONS ON DRAWINGS SHALL HAVE AUTHORITY OVER SCALED. CONTRACTORS AND MANUFACTURERS SHALL VERIFY AND BE RESPONSIBLE FOR ALL DIMENSIONS AND THE CONDITIONS ON THE JOB SITE. ANY VARIATIONS FROM DRAWINGS ARE TO BE REPORTED TO THE LIGHTING DESIGN GROUP, INC. PRIOR TO PERFORMING WORK. THESE DRAWINGS REPRESENT VISUAL CONCEPTS AND CONSTRUCTION AND RIGGING SUGGESTIONS ONLY. THE DESIGNER IS UNQUALIFIED TO DETERMINE STRUCTURAL APPROPRIATENESS OF THIS DESIGN AND WILL NOT ASSUME RESPONSIBILITY FOR IMPROPER ENGINEERING, CONSTRUCTION, RIGGING, HANDLING OR USE OF THIS LIGHTING. ALL MATERIALS MUST COMPLY WITH THE MOST STRINGENT APPLICABLE FEDERAL AND LOCAL FIRE AND SAFETY CODES.

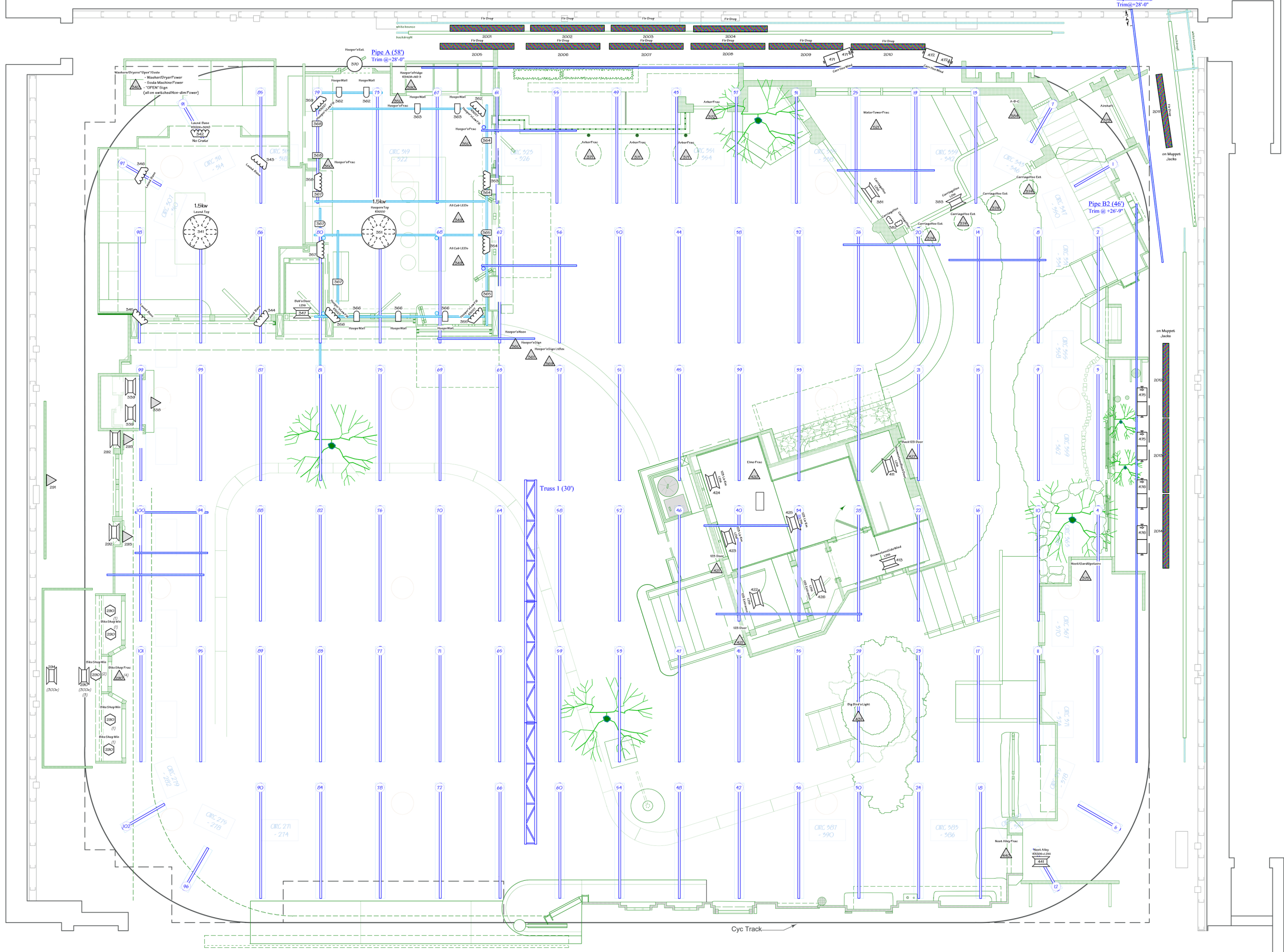


REVISIONS

REV	DRW	DATE	DESCRIPTION
4	dk	1/16/15	Hang Updates
5	dk	2/5/15	Hang Updates
6	dk	4/17/15	Taping Updates
7	dk	12/17/15	Season 47 Updates
8	dk	3/10/16	New 1-2-3 Interior
9	dk	5/5/16	End Season 47 Updates
10	dk	10/16/17	Season 49 Updates
11	dk	10/3/18	Season 50 Updates

Drawing Title:
Set Light PLOT

Producer: sesameworkshop.
 Scale: 1/4" = 1'-0"
 Job #: SW1402
 Drawing Date: 11/15/14
 File Name: Sesame Street 50 Studio 3 LIGHT PLOT V11
 Designer: Daniel Kelley
 Drawn By: dk
 Show Date: 2/2/15
 Facility: Kaufman Astoria Studios, 34-42 34th Street, Astoria, NY 11006



Key:

					Typical:

Notes:
 - Provide 2 Baby Softlights on rolling stands
 - Provide 2 2k Blondes with Chimera Hood (with 1/4 Grid Cloth) on Rolling Stands